

**Fantasea Line**

# **FRX100 VI Housing**

## **Limited Edition**

**for Sony RX100 VI (24-66mm)\***

(Cat. No. 1508)

### **Instruction Manual**



# TABLE OF CONTENTS

<b>TABLE OF CONTENTS .....</b>	<b>2</b>
<b>DISCLAIMER .....</b>	<b>3</b>
<b>INTRODUCTION .....</b>	<b>3</b>
<b>FEATURES &amp; SPECIFICATIONS.....</b>	<b>4</b>
<b>INCLUDED IN PACKAGE .....</b>	<b>5</b>
<b>IDENTIFICATION OF HOUSING PARTS.....</b>	<b>6</b>
<b>SETTING UP THE HOUSING .....</b>	<b>12</b>
PREPARING THE CAMERA .....	12
PREPARING THE HOUSING.....	12
OPENING THE HOUSING .....	14
CHECKING THE O-RING.....	15
INSTALLING THE CAMERA .....	16
CLOSING THE HOUSING.....	17
REMOVING THE CAMERA FROM THE HOUSING .....	18
USING THE CAMERA BUILT-IN FLASH .....	19
<b>OPTIONAL ACCESSORIES.....</b>	<b>20</b>
EXTERNAL FLASHES.....	20
FLASH & VIDEO LIGHTING SETS .....	22
LENS ACCESSORIES .....	22
HOUSING HAND GRIP STRAP .....	23
COLD-SHOE CONNECTOR FOR LIGHTING ACCESSORIES .....	25
MOISTURE DETECTOR .....	25
<b>CARE &amp; MAINTENANCE.....</b>	<b>26</b>
<b>FANTASEA PRODUCT CONSUMER LIMITED WARRANTY .....</b>	<b>27</b>
<b>FANTASEA MOISTURE DETECTOR.....</b>	<b>28</b>
IDENTIFICATION OF PARTS .....	28
SILENCING THE ALARM.....	29
REPLACING BATTERIES .....	29
REPLACING THE ALARM UNIT.....	30

## DISCLAIMER

While every effort has been made in order to ensure that the information included in this instruction manual is accurate and complete, no liability will be accepted for any errors or omissions. Fantasea Line reserves the right to change product specifications and features described herein at any time without prior notice. No part of this instruction manual may be copied, translated or reproduced without the prior written permission of Fantasea Line. Fantasea Line makes no warranties aside from limited product warranty as described at the end of this manual.

## INTRODUCTION

### Note

Please read this manual carefully in order to properly operate the **FRX100 VI Housing Limited Edition**. Store this manual in a safe place for further reference once you have read it.

The **FRX100 VI Housing Limited Edition** features a stylish and ergonomic design, specifically created for the **Sony RX100 VI** digital camera. The **FRX100 VI Housing Limited Edition** is manufactured to the highest professional standards of function, style and durability. It is depth rated to 60m/200 feet and features ergonomically designed and labeled controls. The Fantasea **FRX100 VI Housing Limited Edition** is the ultimate waterproof home for the **Sony RX100 VI**.

The **FRX100 VI Housing Limited Edition** is ideal for outdoor and underwater photography. Underwater photographers can dive or snorkel and capture all the excitement of this fascinating world, while outdoor photographers also have the option of capturing the action of outdoor and water sports activities, such as paddle sports, sailing, boating, surfing, fishing, hunting, backpacking and camping. The **FRX100 VI Housing Limited Edition** is shock resistant and protects the camera from water, sand, dust, frost, impact, as well as other damaging elements and harmful occurrences.

The **FRX100 VI Housing Limited Edition** features a flat port, which allows for mounting a wide variety of wet conversion lenses and using the camera's **24-66mm\*** focal range. In addition to conversion lenses, the **FRX100 VI Housing Limited Edition** was designed to be compatible with a complete accessory system, enabling photographers to enhance the quality of their images.

*\* In depths greater than 40 meters, maximum focal length is limited to 60mm*

## FEATURES & SPECIFICATIONS

- Camera lens focal range is limited to 24-66mm\*
- Depth rated to 60m/200 feet
- Made from durable injection molded Polycarbonate
- Access to all essential camera controls and functions with clearly labeled controls
- Shock resistant
- Double O-ring main seal
- Special cold-shoe mount for lighting accessories
- Removable double fiber optic cable connection plate
- Removable flash diffuser
- Removable anti-glare hood for the LCD screen
- Easy and secure installation of camera
- Moisture Detector and Alarm
- Lens Port Cover
- Hand Strap
- Flat port allows for mounting conversion lenses
- Compatible with a wide range of underwater photo accessories
- Weight (with camera on land): 900g
- Weight (without camera on land): 600g
- Dimensions (without accessories): 15.5 x 14.5 x 12 cm \ 6.25 x 5.75 x 4.75 inch (W x D x H)
- Manufacturer's warranty

*\* In depths greater than 40 meters, maximum focal length is limited to 60mm*

## INCLUDED IN PACKAGE

1. FRX100 VI Housing Limited Edition
2. Removable flash diffuser with secure line
3. Hand lanyard
4. Silicone grease
5. Anti-glare hood for LCD screen
6. Hand strap
7. Screwdriver
8. Silica gel packs
9. O-ring remover
10. Spare back door O-ring seal
11. Diffuser quick release secure string (housing side)
12. Lens Port Cover



## IDENTIFICATION OF HOUSING PARTS

### Note

1. Please refer to the Sony RX100 VI camera instruction manual for detailed descriptions and instructions regarding all camera controls and functions.
2. It is strongly recommended that you familiarize yourself with all the controls topside before using these controls underwater.

**Top/Front Side of Housing** - Corresponding numbered descriptions are found on the following page





Numbered descriptions below refer to corresponding numbers on the top/front housing graphic on the previous page:

1. **Zoom Control** – Turning this control activates the camera zoom button.
  - a. In Playback Mode - use the zoom control as an index or playback lever.
  - b. In Shooting Mode –
    - i. Turn the zoom control clockwise to zoom out, increasing the area visible in the frame.
    - ii. Turn the zoom control counterclockwise to zoom in, so that the subject fills a larger area of the frame and for close-up and macro images to be taken.

<p style="text-align: center;"><b>Zoom Control Important Notice</b></p>	<p>The <b>FRX100 VI Housing Limited Edition</b> allows zooming in with the camera lens to a <b>maximum focal length of 66mm*</b>. Attempting to zoom in any further than 66mm might result with a lens error that can only be solved by turning the camera off and back on again. Follow the guidelines below for smooth zoom operation of the camera when installed inside the housing:</p> <ol style="list-style-type: none"> <li>1. Verify that the camera zoom speed is set to “Normal”, which reduces the chances of a lens error once the focal length reaches 66mm and the camera lens is blocked by the housing lens port, assuming the zoom lever isn’t turned any further. Enter the camera menu by pushing the “MENU” button → Camera Settings 2 (purple tab) → Zoom page → Zoom speed → Select “Normal”.</li> <li>2. When zooming in with the camera lens, follow the focal length indicator on the camera screen. Once reaching a focal length of 65mm, release the zoom lever. Holding the zoom lever turned further than this point might result with a lens error and eventually, might also damage the lens.</li> <li>3. Alternatively, to avoid accidentally zooming in further than 66mm, you can program the camera to zoom to a certain focal length using the MR (Memory Recall) function.</li> </ol> <p><u>Memory Programming:</u></p> <ol style="list-style-type: none"> <li>a. Adjust the desired settings on the camera (including the zoom, for instance – 60mm).</li> <li>b. Push the “Menu” button.</li> <li>c. On the first tab (📷), scroll rightwards to the “Shoot Mode/Drive” page (3). Scroll downwards and select the item “MR Memory”.</li> <li>d. Select a preset to save the settings on (1 / 2 / 3 / M1 / M2 / etc.) and push the center button to confirm your selection.</li> <li>e. Push the “Menu” button again to exit.</li> </ol> <p><u>Memory Recalling:</u></p> <ol style="list-style-type: none"> <li>f. To recall the preset you’ve programmed, such as when shooting macro and planning to use the 60mm focal range, turn the mode control dial to “MR”.</li> <li>g. Select the preset you’ve previously programmed.</li> <li>h. All settings are adjusted according to the memory you’ve programmed.</li> </ol>
---	--

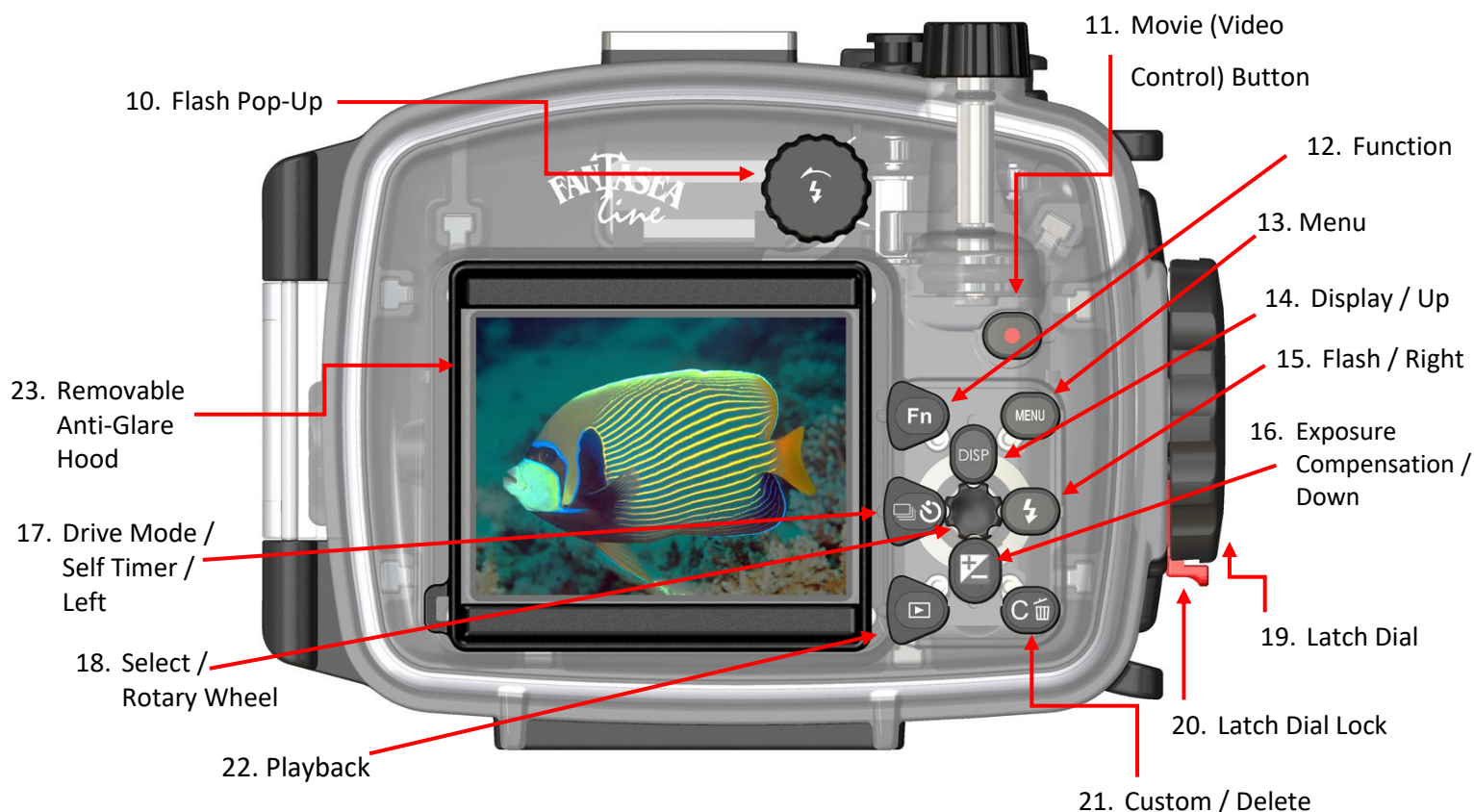
	<ol style="list-style-type: none"> <li>4. As with any other underwater photo system, follow the golden rule of underwater photography by <b>getting close to the subject, then getting closer!</b> Unless shooting with a macro conversion lens, it is best to reduce the distance between the camera and the subject rather than zooming in with the camera lens.</li> <li>5. When shooting macro with a macro conversion lens installed on the housing lens port, take into consideration that “wet” macro lenses produce the best results when the camera lens is fully zoomed in. Set the camera lens focal length to 66mm and avoid zooming out and in again with the lens. Instead, to recompose your image, move closer or farther away from the subject.</li> <li>6. In case a lens error is indicated on the camera screen as a result of over-zooming in with the camera lens, simply turn the camera off and back on again. Once the camera is turned off, allow the camera lens to fully retract prior to turning the camera back on. If turning the camera off and back on again doesn’t solve the lens error, repeat this by turning the camera off, allowing more time for the lens to fully retract, and then turning it back on.</li> </ol> <p><i>* In depths greater than 40 meters, maximum focal length is limited to 60mm</i></p>
--	--

2. **Shutter Release** – Activates the camera shutter release button and auto focus prior to taking the picture.
3. **On/Off**- Pushing this control activates the camera power switch button and turns the camera on/off.
4. **Mode Dial** – Turn this dial to change shooting modes.  
Important Notice! It is recommended to align housing and camera mode dials prior to installing the camera inside the housing. Please refer to the section “Installing the Camera” for more information.
5. **Cold-Shoe Mount for Lighting Accessories**- Enables mounting a flash, video light, torch or focus light on top of the housing by using a dedicated connector. For further information regarding such connectors, please visit the Fantasea website – [www.fantasea.com](http://www.fantasea.com)
6. **Fiber Optic Cable Plate**-
  - a. When installed on the housing, the fiber optic cable plate and the two adaptors inserted inside it allow for an easy attachment of 2 fiber optic cables to the housing. For further instructions, please refer to the section “External Flashes”.
  - b. Remove the fiber optic cable plate from the housing in order to make use of the internal camera flash during your dive. In order to remove the plate, insert your fingers beneath the adaptors installed inside the plate and pull the plate upwards till it is removed from its slot. Note that when photographing using the camera built-in flash only, the flash diffuser accessory should be installed, or else unwanted shading will occur in most images taken.



- c. Make sure the fiber optic cable plate is secured to the housing by its secure line in order to avoid losing it during the dive.
  - d. If using only one external flash, make sure the second fiber optic cable adaptor remains in its place to block any light coming out of the exposed adaptor hole.
- 7. **Control Ring** – Turning this control activates the control ring around the camera lens. Your favorite functions can be assigned to the control ring and when shooting, established settings can be changed just by turning the control ring.  
To edit the settings of the control ring, enter the Menu → Custom Settings → Custom Key Settings → Control Ring, and select the desired function.
- 8. **Lens Port-** The housing lens port features a 67mm thread and it's compatible with a wide variety of "wet" accessory filters and lenses, including macro lenses, wide angle lenses and color correction filters. In order to maintain the threads of the lens port, it is recommended to apply a small amount of silicone grease to the threads on the housing port and on the accessory lens prior to installation. For a selection of lens accessories available, visit the Fantasea website [www.fantasea.com](http://www.fantasea.com)
- 9. **Tripod Mounting Screw Holes** – Enable mounting the housing on a tray, thereby allowing for the addition of various image enhancement accessories to your underwater photo system. By choosing any one of 3 adjustment positions, you can better determine how and where to position the housing on the tray. This configuration also allows for the use of 2 set screws for the tray mount, thereby preventing any swiveling of the housing on the tray.

**Back Side of Housing -** Corresponding numbered descriptions are found below the image



**10. Flash Pop-Up** – Turning this control counterclockwise will pop-up the camera built-in flash.

Note that once the camera built-in flash has been popped up, it can be disabled again using the *Flash / Right* control (no. 15) and selecting “flash disabled” on the flash mode menu. Turning the Flash Pop-Up control clockwise will not have any effect on the built-in flash.

**Note:** When shooting in M (Manual), A (Aperture priority) or S (Shutter Speed priority) shooting modes, please take into consideration that once the flash has been popped up – it cannot be disabled. Therefore, in such cases, it's recommended to switch to Auto shooting mode to eliminate the flash after it has been popped up.

**11. Movie (Video Control) Button –**

- Push the Movie (video) Control in any shooting mode to start recording a video. The record symbol (REC) appears and displayed with the elapsed time. To record a video in HFR shooting mode, first push the Select (center) control and then the Movie Control.
- Push the Movie Control again in order to stop recording.

12. **Function** – Allows you to register 12 functions and recall those functions when shooting.
- Push the Function control.
  - Select the desired function by using multi-selector controls.
  - Select the setting value by turning the control ring or by using multi-selector controls.

13. **Menu** - Pushing this control activates the camera menu button.

#### ***Multi-Selector buttons (14-18)***

14. **Display / Up** – Pushing this control activates the camera Display / Up button.

15. **Flash / Right** – Pushing this control activates the camera flash mode / right button.

16. **Exposure Compensation / Down** – Pushing this control activates the camera exposure compensation / down button.

17. **Drive Mode / Self Timer / Left** – Pushing this control activates the camera drive mode / left button.

18. **Select / Rotary Wheel** –

- Pushing this control activates the camera Select (confirm selection) button.
- Rotating this control operates the camera rotary wheel, thereby enabling to alter exposure values, navigate through menus and other functions assigned to the rotary wheel.

19. **Latch Dial** – This dial ensures the housing is properly closed and watertight sealed, when locked fully into place. For further instructions, please refer to the sections "Opening the Housing" and "Closing the Housing".

20. **Latch Dial Lock (red lever)** - Ensures the secure dial doesn't accidentally open during the dive. For further instructions, please refer to the sections "Opening the Housing" and "Closing the Housing".

21. **Custom / Delete** –

- In playback mode, push this control to delete images.
- To assign additional functions for this button, enter the Menu → Custom Settings → Custom Key Settings → C Button, and select the desired function.

22. **Playback** – Pushing this button allows you to enter the playback mode and to review images or videos stored on the memory card.

23. **Removable Anti-Glare Hood** – The anti-glare hood enables a better view of the LCD screen when shooting in bright conditions. It can be removed and installed during the dive. For further instructions, please refer to the section "Preparing the Housing".

## SETTING UP THE HOUSING

### Note

**It is important that a first dive is always carried out with the housing empty (no camera installed inside) in order to verify that the housing watertight seal has not been affected during transport and after long periods of storage.**

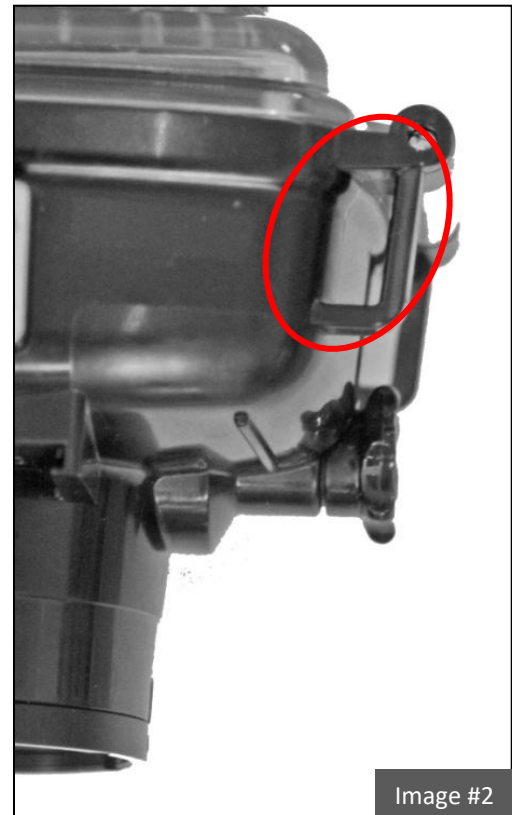
### PREPARING THE CAMERA

1. Install a (preferably empty) memory card (16 GB+ capacity recommended) and a fully charged battery inside the camera. Note that SDXC Class10 or UHS-I compatible memory cards are required for high frame rate recording with the RX100 VI.
2. Remove the camera strap from the camera if one was installed.
3. Turn the Mode Dial so the Auto (green symbol) shooting mode is selected and aligned with the white mark on the left of the wheel. This will allow for the camera and housing mode dials to be aligned, so the housing mode dial will indicate the proper mode selected by the camera dial.
4. It is recommended to program the camera to the most frequently used underwater photo mode, lighting and other key settings prior to installing the camera in the housing.
5. Verify that the camera zoom speed is set to “Normal” on the camera menu. See *Zoom Control Important Notice* on page 7 for further information.

### PREPARING THE HOUSING

1. When using the housing for the first time-
  - a. Peel the transparent plastic screen protector off the back door exterior of the housing.
  - b. Install the hand lanyard on the housing by inserting it through the lanyard loop on the bottom right of the housing (facing from back), then pulling it through itself and testing it in order to make sure it is secure (image #1 on the following page).
  - c. Install the housing side of the diffuser quick release secure line by tying it around the upper rectangular loop at the top left side of the housing, where the Fiber Optic Cable Plate secure string is attached to as well (image #2 on the following page). Please note that this line may come assembled and then there is no need for installation.

- d. Open the housing (see section “Opening the Housing” on the following page) and remove the anti-glare hood out of the housing. Secure the anti-glare hood to the housing by tying its secure string around the lower rectangular loop at the bottom left side of the housing. Install the anti-glare hood over the anti-glare hood rails at the back of the housing. First install the anti-glare hood over the top rail (image #3 on the following page) and then gently and carefully stretch it downwards to install it on the bottom rail, making sure it's sitting securely on both upper and lower rails (image #4 on the following page).
- e. If using a Hand Strap, install it on the two loops found at the right side of the housing. Please refer to the section “Hand Strap” for further information.
- f. **It is important that a first dive with the housing is always made without the camera in order to verify that the housing watertight seal has not been affected during transport and after long periods of storage.**

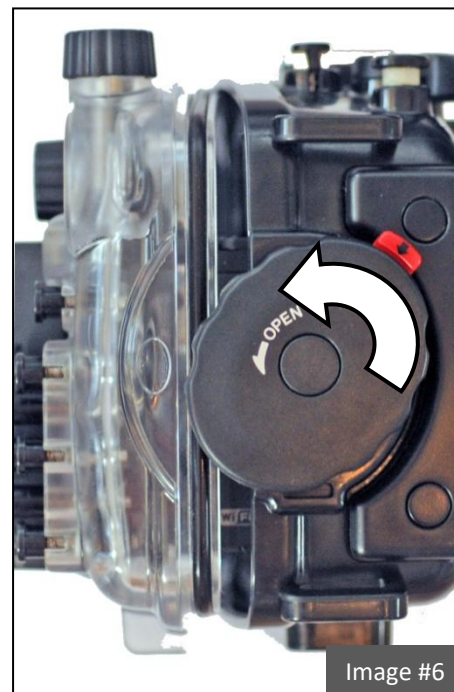






## OPENING THE HOUSING

1. Pull the small red tab located at the bottom of the latch dial outwards (up and away from the housing), as indicated by the arrow direction (image #5). There is no need to apply any force.
2. While holding the lock dial up, turn the latch dial counterclockwise until the red latch tab is located at the top of the latch and cannot be turned any further (image #6). There is no need to apply any force.
3. Carefully open the back side of the housing.





4. Note that when opening the housing for the first time or when opening it after airplane trips, increased resistance might be encountered. **Therefore, it is important not to lock the housing and to leave it slightly open when transporting by air.**

## CHECKING THE O-RING

1. Prior to each closure of the housing, the back door **black** O-ring should be visually inspected. If there is any debris present, including dirt, sand, dust, hair or any other matter, it must be cleaned to ensure a proper watertight seal.
2. In order to clean the **black** O-ring, first remove it from the housing:
  - a. Insert the O-ring remover between the black O-ring and the groove it is seated in (image #7).
  - b. Slip the tip of the inserted O-ring remover below the black O-ring, while making sure the O-ring doesn't get damaged (image #8).
  - c. Carefully hold the O-ring with your fingertips in order to remove it from the groove.



3. Cleaning the O-ring is a simple matter of wiping it with a damp, soft cloth to remove the foreign matter. **Be careful the cloth you use does not leave any of its own material behind as this can also affect the effectiveness of the seal.**
4. Apply a slight layer of silicone grease on the black O-ring. Please note that the amount of lubrication required on the O-ring is only enough to allow it to slip into place without friction, so it does not twist or become dislodged. More grease is not necessarily better, and in some cases might interfere with the watertight seal of the housing.

5. When replacing the O-ring, place it back into the groove starting at one corner and gently pressing it into the groove all around the housing until it is all seated in the groove and no part of it is sticking up or out of the groove.
6. The white O-ring featured on the back side of the front door should be visually inspected prior to each dive. If there is any debris present, gently wipe the area with a soft microfiber cloth in order to cleanse it.
7. **The white O-ring featured on the back side of the front door shouldn't be removed unless it's damaged.**

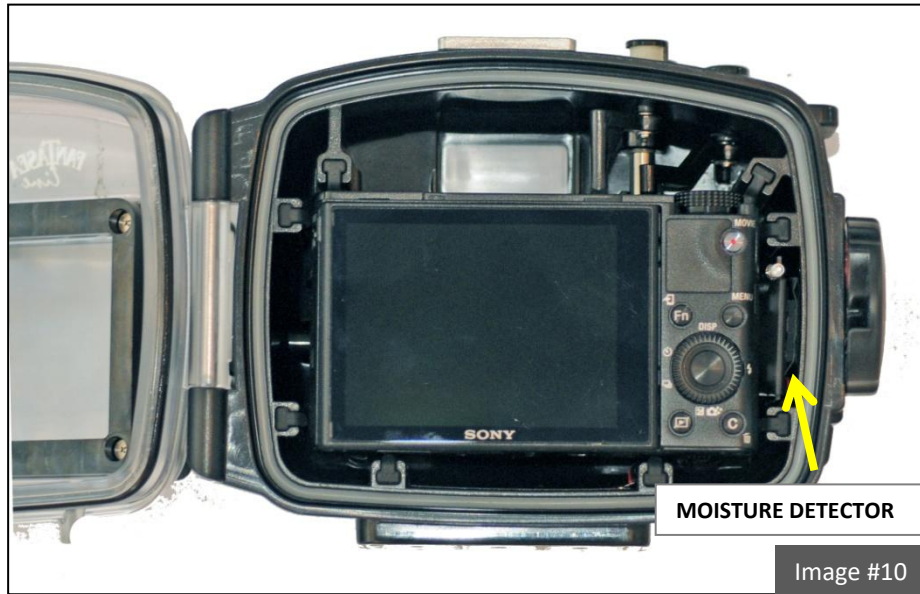
## INSTALLING THE CAMERA

Since the **FRX100 VI Housing Limited Edition** is specifically designed for the **Sony RX100 VI**, installing the camera in the housing is quite simple.

1. Make sure the camera is turned off.
2. Hold the camera parallel to the housing and then gently install it inside (image #9). Avoid inserting one side of the camera prior to the other, as this will make the installation difficult and might cause damage to the camera or housing.
3. **Take special care not to touch or damage the moisture detector device when installing the camera.** The Device is located inside the housing on the inner (right) side of the housing interior to the latch dial (image #10 on the following page).



Image #9



4. If inserting a silica gel pack inside the housing in order to prevent moisture, it is best to insert it on the left side of the camera, in the slot midway up between the two rubber shock absorber mounts, where it doesn't interfere with proper housing operation. It is important to make sure that the silica gel pack doesn't stick out, or else it might interfere with the watertight seal of the housing.

## CLOSING THE HOUSING

1. Turn the housing Control Dial till the *Auto* shooting mode symbol is positioned at the left (image #11). Make sure not to accidentally turn this control any further before closing the housing.
2. Turn the latch dial so that the small red tab located on the latch is pointed towards the front side of the housing (image #12 on the following page).
3. Carefully close the back door of the housing, pushing it against the front door, while making sure there is nothing sticking out of the housing or impairing the smooth closure of the back door. Then firmly press the back door against the forward section of the housing.
4. Turn the secure dial clockwise till the lock dial clicks. The small red tab should then be pointed towards the bottom of the housing (image #13 on the following page).



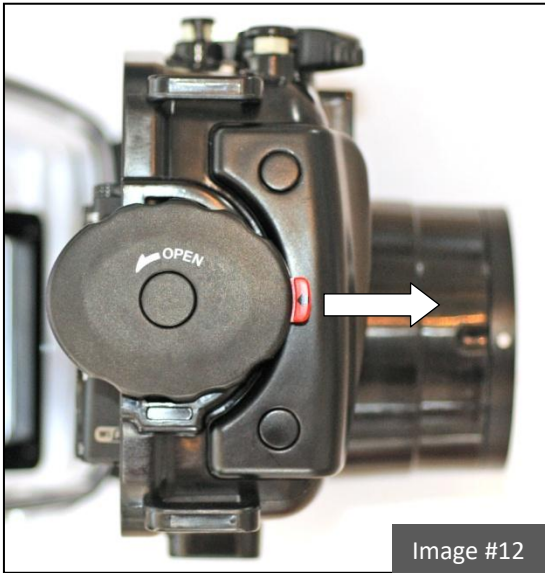


Image #12



Image #13

5. Gently try pulling the back door away from the front door. If the housing is properly closed, it should be impossible to open the back door.
6. Visually inspect the black O-ring through the transparent back door for proper closure. Make sure it isn't twisted or out of the groove and that no foreign matter has been caught in the seal, such as secure lines, sand, grit, hairs or any other foreign substance.
7. Turn the camera on and check that the extended camera lens does not catch or bend the black rubber seat on the inside of the lens port. It is vital that this rubber seat does not disturb the lens.
8. Test housing control buttons to make sure that the camera was properly installed inside the housing and that nothing interferes with normal operation of the camera. It is recommended to take a few images once the camera has been installed inside the housing and prior to the dive in order to ensure proper operation.
9. If making use of the internal camera flash, install the removable flash diffuser on the housing and attach the flash diffuser quick release secure string in order to avoid losing it underwater.
10. Prior to diving with the housing, submerge it in a shallow tub of water or rinse tank. Carefully look at the housing to make sure no bubbles are escaping from it and that no water is entering.

## REMOVING THE CAMERA FROM THE HOUSING

1. After use, thoroughly rinse the housing fresh water. Prior to opening the housing, make sure both your hands and the housing are clean and dry. It is recommended to have a clean, dry and soft towel handy in order to dry your hands and the water drops on the housing.
2. When opening the housing, it is important to hold it so the lens port is facing down. This will prevent the camera from slipping out of the housing while being opened.

3. Open the housing as described in the section “Opening the Housing” and carefully remove the camera from the housing. Take sufficient care that no water drips from your hair and body onto the housing and camera.

## USING THE CAMERA BUILT-IN FLASH

1. The Sony RX100 VI has a built-in flash capable of illuminating nearby underwater subjects. For stronger lighting, illuminating subjects that are farther away, avoiding backscatter, eliminating shadowing effects and photographing in deep water, an accessory slave flash is recommended. For further information, please refer to the section “External Flashes”.
2. In order to make use of the built-in camera flash, remove the Fiber Optic Cable Plate from the housing. Insert your fingers beneath the adaptors installed inside the plate and push the plate upwards till it is removed from its slot. Make sure the fiber optic cable plate is secured to the housing by the dedicated secure line in order to avoid losing it during the dive.
3. The removable flash diffuser included assists with softening the built-in flash output, increasing its angle of coverage and decreasing the amount of *backscatter* in the images (the unattractive snowstorm effect of the flash reflecting off suspended particles in the water).

- a. In order to install the removable flash diffuser, hold the diffuser above the housing lens port with the diffuser pointing upwards (image #14).
- b. Gently push the diffuser ring downwards and against the housing lens port until it clicks (image #15).
- c. Attach the flash diffuser quick release secure string to the other side of the string connected to the housing in order to avoid losing the flash diffuser underwater.

- d. In order to remove the flash diffuser from the housing, gently pull it upwards and away from the lens port until it snaps out of place.
- e. During the dive, in order to disable the flash diffuser, the diffuser can be turned clockwise around the lens port until it reaches a horizontal position and clicks (image #16 on the following page). This rest-point of the diffuser eliminates the need to completely remove it from the housing during the dive.





4. It is best to set the camera flash mode to “Flash Always” as artificial light is required in most compositions for the purpose of color and light reproduction. This will ensure the built-in camera flash fires on every image taken regardless of ambient light available. Please refer to the camera instruction manual for further instructions regarding such settings.
5. Turn the Flash Pop-Up dial counterclockwise in order to pop up the camera built-in flash.
6. Note that once the camera built-in flash has



been popped up, it can be disabled again using the *Flash / Right* control and selecting “flash disabled” on the flash mode menu. Turning the Flash Pop-Up control clockwise will not have any effect on the built-in flash.

When shooting in M (Manual), A (Aperture priority) or S (Shutter Speed priority) shooting modes, please take into consideration that once the flash has been popped up – it cannot be disabled. Therefore, in such cases, it's recommended to switch to Auto shooting mode to eliminate the flash after it has been popped up.

## OPTIONAL ACCESSORIES

FOR THE FULL SELECTION OF FANTASEA ACCESSORIES COMPATIBLE WITH THE FRX100 VI HOUSING LIMITED EDITION, PLEASE REFER TO THE FANTASEA WEBSITE – [WWW.FANTASEA.COM](http://WWW.FANTASEA.COM)

### EXTERNAL FLASHES

Underwater flashes and strobes were designed to improve the color, lighting and quality of your underwater images. Since light and color are absorbed by water, using an external flash is recommended in all depths, during daylight and night dives. In addition to retrieving the color and light absorbed by water, underwater flashes also allow for creative lighting, assist in reducing the amount of backscatter and prevent the shadowing effect caused by the housing lens port when using the built-in camera flash, especially when accessory lenses are mounted on the housing.

The **FRX100 VI Housing Limited Edition** can be used with underwater slave flashes. These external flashes feature a slave sensor which triggers the external flash to fire in sync with the internal camera flash. Most underwater slave strobes are capable of synchronizing with the internal camera flash without any cables under certain diving conditions. They feature a slave sensor that triggers the strobe to fire in sync with the camera built-in flash as long as the strobe and the camera are positioned on the same axis and as



long as there is not much ambient light available. However, if the strobe slave sensor isn't pointed directly at the internal camera flash, or when photographing during daylight, in clear water and bright conditions, the slave sensor might fail recognizing the output of the internal camera flash. Connecting a fiber optic cable between the internal camera flash and the slave strobe ensures full synchronization in all angles and diving conditions.

#### Attaching Fiber Optic Cables to the Housing

1. When installed on the housing, the fiber optic cable plate and the two adaptors inserted inside it allow for an easy attachment of up to 2 fiber optic cables to the housing.
2. If the fiber optic cable you have features a different type of adaptor, remove this adaptor from the end of the cable and use the adaptors included with the **FRX100 VI Housing Limited Edition** instead.
3. Remove the Fiber Optic Cable Plate from the housing. Insert your fingers beneath the adaptors installed inside the plate and push the plate upwards till it is removed from its slot.
4. Prior to installing the fiber optic cable on the Fiber Optic Cable Plate, make sure that the two black adaptors are firmly and properly installed inside the plate (image #17).
5. Insert the exposed end of the fiber optic cable into the small hole of the adaptor unit, starting from the end that features a screw and pushing it towards the end that features an O-ring (image #18), until the fiber optic cable reaches the end of the adaptor, which can be verified by looking from the other side of the Fiber Optic Cable Plate. The fiber optic cable should be extending out no more than 1mm (image #19).



Image #17



Image #18



Image #19

6. Use the screwdriver included in order to tighten the screw on the adaptor (image #20). Tighten it enough to stabilize the fiber optic cable inside the adaptor, but don't tighten it too strongly.

**Tightening the screw too much might damage the fiber optic cable.**

7. Once the fiber optic cable has been installed on the Fiber Optic Cable Plate, install the Fiber Optic Cable Plate by inserting it inside the dedicated slot on the housing and pushing it all the way in.

8. When installed on the housing, the Fiber Optic Cable Plate blocks the internal camera flash, so only the external slave flash illuminates the subject. This diminishes the effects of backscatter, as well as eliminates any shadowing effect caused by housing lens port, especially when lens accessories are mounted on the housing.



Image #20

4. Follow the instructions in your strobe manual on how to synchronize your camera with the external strobe and to select the proper pre-flash program for your camera. It is recommended to test the synchronization when photographing opposite a mirror. In this case, the output of both the built-in camera flash and the strobe should be visible in the test shot taken.
5. **When attaching Sea&Sea fiber optic cables to the housing**, housing adaptors should first be removed off the fiber optic cable plate. This can be done by gently pulling them out from the front side of the plate, using the aid of a small needle nose set of pliers. Make sure not to damage the fiber optic cable. It's recommended to apply some silicone grease on the small o-rings of these adaptors, so they can be installed and removed more easily. Sea&Sea fiber optic cables feature an adaptor that fits right inside the fiber optic cable plate. Simply push the adaptor featured at the end of the cable into the dedicated slots on the front side of the plate, instead of the adaptors you've just pulled out, till they are fully fitted inside. Gently pull the fiber optic cable in order to make sure that it doesn't come off easily.

## FLASH & VIDEO LIGHTING SETS

A variety of Fantasea flash and video lighting sets are available for the housing, enabling you to further enhance your images and videos. These sets include trays, Flex arms, slave flashes, powerful and sturdy yet stylish video lights, fiber optic cables, focus lights, padded bags and more.

## LENS ACCESSORIES

The lens port of the **FRX100 VI Housing Limited Edition** features a 67mm thread, which can accommodate all 67mm conversion lenses and color correction filters, such as:

- **Optical Wide Angle Wet Lenses:** Wide angle lenses allowing for high quality wide angle images.

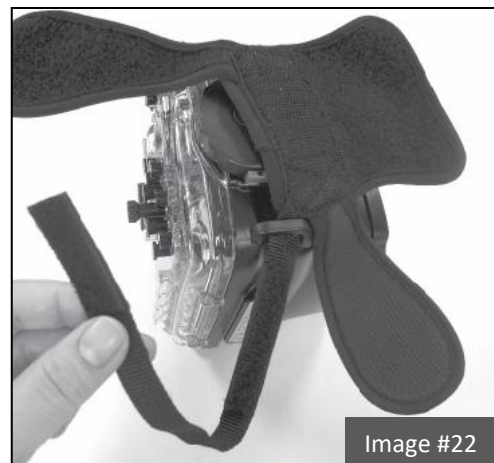
- **Wide Angle Lenses:** Perfect for shooting seascape, divers, ship wrecks and schools of fish, without moving further away from the subject, thereby still taking full advantage of water clarity and artificial light sources.
- **Macro Lenses:** Perfect for shooting close-up images of fish, corals, textures and more. These macro lenses magnify the subject and enable the camera to focus on short distances for creating super sharp images.
- **Color Correction Filters:** Used to restore the colors absorbed by the water. In shallow depths, these filters can serve as an attractive alternative to artificial light sources. These filters can be mounted directly on the housing lens port, and can also be installed inside wide angle and macro accessory lenses.
- **Lens Holders:** Attach to Flex or Ball & Joint arms, enabling safe, secure and easily accessible storage for your lens accessories when not in use during the dive.

## HOUSING HAND GRIP STRAP

The **FRX100 VI Housing Limited Edition** features two hand strap loops on the “latch” side of the housing, which enable the attachment of an optional hand grip strap for the housing in order to improve hand grip, especially when using the housing during extreme sports activities.

### Installing the Fantasea Hand Strap (Cat. No. 11188) on the Housing

1. Pull the narrow nylon Velcro strip through top of lower housing ring (below the locking latch) in a downward direction to the end of the strip (images #21 and 22).



2. Place the wide flat Velcro mid-section over the locking latch and pull the thin Velcro strip over the top of this mid-section and through the upper housing ring from bottom to top all the way through (image #23).
3. Double back the thin nylon Velcro strip and secure it tight to the top of the Velcro strip previously inserted (same strip) and press down. Then cover with the wide flap (should be on the right side) over the thin Velcro strips (image #24).
4. Place top flap (with logo) over bottom flap and press to close (image #25).



Image #23

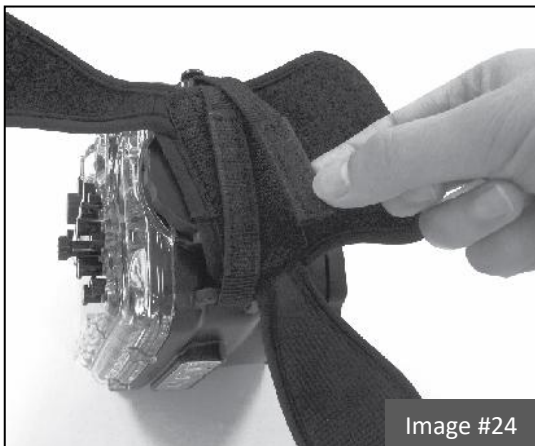


Image #24



Image #25

5. To use, slide right hand from back side to front of the Hand Strap with knuckles protruding slightly out of the front (lens side) of the strap (image #26). Have it snug but not too tight, to allow for control manipulation.
6. Always use the wrist lanyard with the hand strap.
7. When opening or closing the housing, you may need to loosen the Hand Strap slightly in order to rotate it forward to allow for easier opening and closing of the latch.
8. When closing the housing, take special notice and care not to close part of the Hand Strap inside the housing, which will interfere with the watertight seal of the housing.
9. Make sure to rinse the Hand Strap in fresh water and then dry after every use. Store in a dry, shaded area.



Image #26

## **COLD-SHOE CONNECTOR FOR LIGHTING ACCESSORIES**

The Cold-Shoe Mount featured on the housing enables mounting a flash, video light, night dive torch or focus light on top of the housing by using a standard Cold-Shoe connector mount.

## **MOISTURE DETECTOR**

The **FRX100 VI Housing Limited Edition** comes with a Moisture Detector installed inside (on the inner side of the housing latch dial). Moisture detectors are very sensitive, so whenever moisture is detected by the sensor located at the bottom of the housing, the moisture detector LED light begins flashing and a warning alarm starts beeping, thereby alerting the user of a possible leak. For further instructions, please refer to the *Fantasea Moisture Detector* section.

## CARE & MAINTENANCE

The Fantasea **FRX100 VI Housing Limited Edition** requires only a minimum amount of care for safe and reliable performance. The following tips will enable you to get the best results:

1. Always rinse your housing in streaming fresh water and if possible soak the housing in a fresh water tub or rinse tank for about 20 minutes after every dive in order to dissolve the salt water crystals from around the controls and openings of the housing. Manipulate each of the movable controls to assist the removal of salt particles from these tight areas.
2. Allow the housing to dry thoroughly before packing away for the day or for the trip home. You may use a soft towel or cloth to dry the housing. Be sure there is no grease or other debris on the towel.
3. Visually check the condition of the black O-ring before every dive. If it is dirty, clean it with fresh water and dry it with a soft cloth as described throughout the manual. If it is damaged in any way, such as cut or perforated, replace it before using the housing again.
4. It is recommended to slightly lubricate the black O-ring periodically. It's important to note that the amount of lubrication required on the O-ring is only enough to allow it to slip into place without friction, so it does not twist or become dislodged. More grease is not necessarily better, and in some cases might interfere with the housing watertight seal.
5. Use only the supplied silicone grease for lubricating the back door black O-ring. Use of any other grease might impair the watertight seal of the housing.
6. Avoid removing the white O-ring featured on the back side of the front door unless it's damaged.
7. Be careful not to get greasy fingerprints or dirt on the lens port. This will affect the image quality. Wipe any dirt or grease off with fresh water and a soft cloth.
8. Never handle the housing with your hands coated in suntan, oil or cream. Avoid getting any oils, creams or petrol-related substances or liquids on the housing surface, as this can distort and damage the housing materials.
9. Do not drop the housing on hard surfaces, it could crack and its watertight seal might be damaged.
10. Do not disassemble or modify the housing, as this may cause leaks.
11. Do not leave the housing in direct sunlight, inside a car in hot weather, or near a heater. Heat may warp the housing and cause leaks. If you have to leave the housing in the sun, it is important to cover it with a towel.



12. Travel with the housing protected in a padded case. It is best to remove the camera from inside the housing when traveling and to provide it with its own protective case or compartment.
13. Always leave the housing slightly open when transporting by air.
14. Never dive with the Fantasea **FRX100 VI Housing Limited Edition** to a depth greater than 60 meters/200 feet.
15. It is important to carry out the first dive without the camera inside the housing. Check that the watertight seal has not been affected during transport and long periods of storage.
16. It is likewise recommended to visually monitor the housing during every descent, especially for the first 10 meters/33 feet. If water is observed entering the housing or bubbles escaping from it, the housing should be rotated to a *port down position* and held that way as you return to the surface immediately and get it out of the water.

## FANTASEA PRODUCT CONSUMER LIMITED WARRANTY

---

“Fantasea” warrants this Fantasea Line branded product against defects in materials and workmanship under reasonable use for a period of ONE (1) YEAR, (two years, where required by law as determined by the origin of the authorized dealer). This warranty is effective from the date of retail purchase from Fantasea or an authorized Fantasea dealer, by the original end-user purchaser (“Warranty Period”). This warranty does not cover any commercial use of the product. If a product defect arises and a valid claim is received within the Warranty Period, at its option, Fantasea, or its authorized service facilities will either (1) repair the product defect at no charge, (2) exchange the product with a product that is new or which has been manufactured from new or serviceable used parts and is at least functionally equivalent to the original product. The warranty will not extend beyond the original warranty period. Your Fantasea Product should be registered within 30 days of purchase. You must keep the proof of purchase which indicates the date on which the purchase was made; as you may be required to show proof of purchase if you need warranty service. The following conditions apply: 1. This warranty extends to the original purchaser only. It is not assignable or transferable. 2. The warranty does not cover damage resulting from misuse, abuse, negligence, or accidents. Proper maintenance of the Product is the responsibility of the owner. 3. The warranty does not cover damage directly or indirectly resulting from the use of unauthorized replacement parts or service performed by unauthorized facilities. 4. This warranty does not cover any damage to any other product used in conjunction with the Fantasea product, including cameras and lenses, and resulting from any defect in the product materials or workmanship. 5. The cost of sending the product back to Fantasea or its authorized service facilities is the responsibility of the customer. 6. The warranty does not cover any incidental damages resulting from any defects in the product. This expressly includes any travel reimbursements or any other costs associated with the purchaser’s optional use of the product. The conditions of this warranty are expressly in lieu of all other expressed warranties, including the payment of consequential or incidental damages for the breach of any warranty. Please register your product on line at this URL:

<http://www.fantasea.com/registration>.

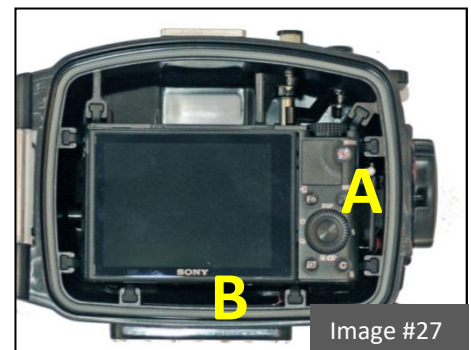
## FANTASEA MOISTURE DETECTOR

### Note!

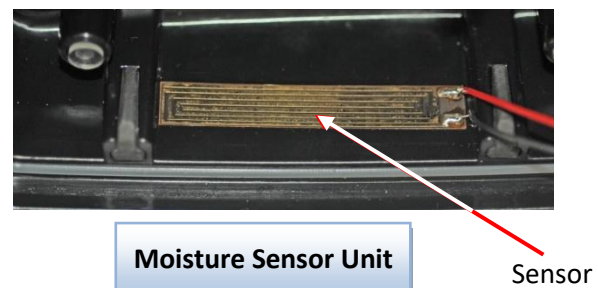
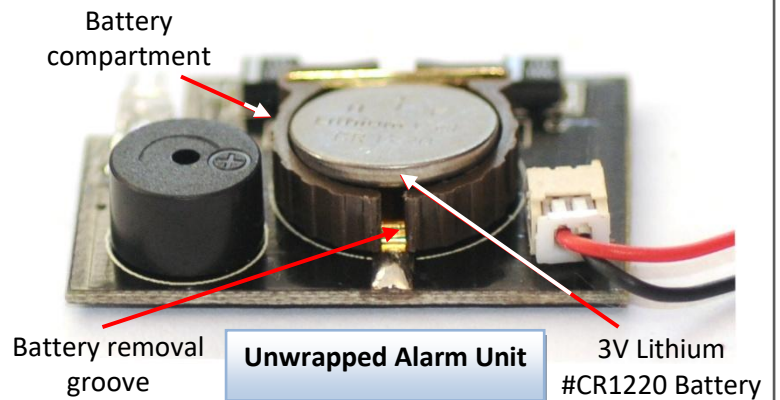
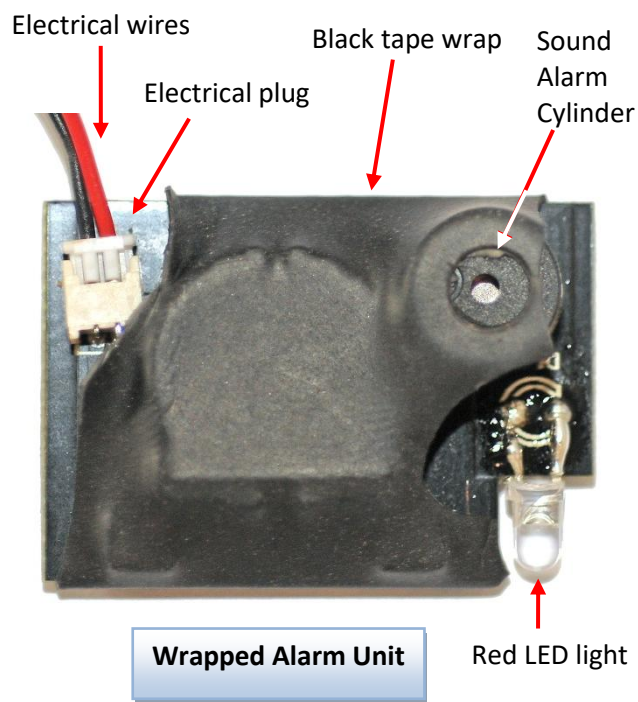
Never soak or wash the interior of the housing with water. This will set off the alarm in a way that cannot be disabled, eventually causing irreparable damage to the electronic unit!

The moisture detector is a bonus add-on component and not an integral part of the housing. Accordingly, it is not part of the housing warranty coverage. The moisture detector has no warranty coverage.

The alarm unit of the Moisture Detector is installed inside the housing, opposite the latch dial (image #27 – item **A**). The Moisture Sensor unit is installed just under the camera (image #27 – item **B**). A thin wire connects these units. Moisture detectors are very sensitive, so whenever moisture is detected by the sensor, the moisture detector LED light begins flashing and a warning alarm starts beeping, thereby alerting the user of a possible leak.



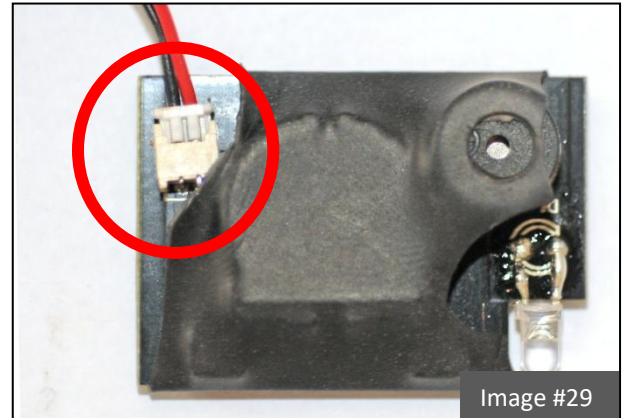
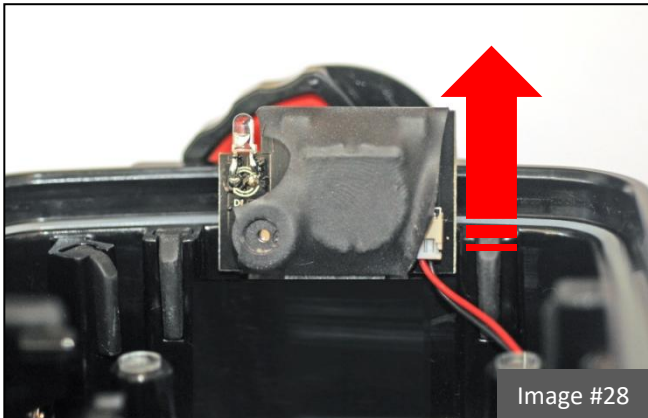
### IDENTIFICATION OF PARTS



## SILENCING THE ALARM

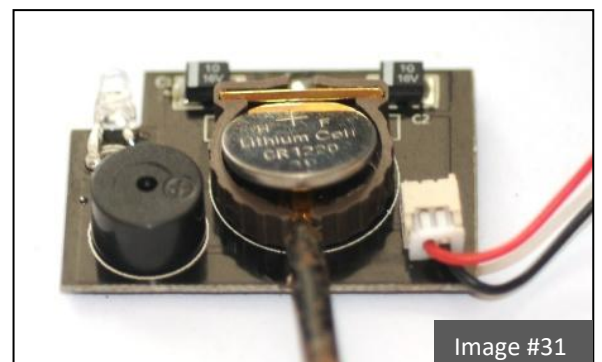
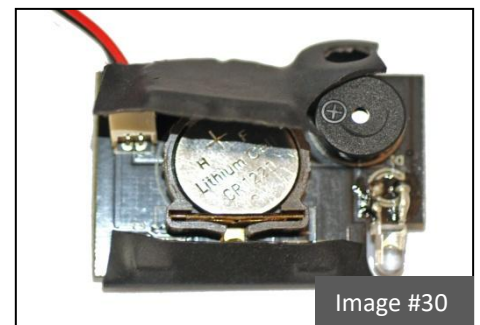
1. In order to silence the alarm after it goes off, wipe the Moisture Sensor unit at the bottom of the housing gently with a soft dry cloth in order to dry it off.
2. If this doesn't help, remove the alarm unit from the housing by gently sliding it out of its slot (image #28).
3. Expose the white electrical plug under the black tape wrap (image #29).
4. Disconnect the electrical wires plug from the alarm unit socket.

1



## REPLACING BATTERIES

1. Remove the alarm unit from the housing by gently sliding it out of its slot (image #28).
2. Disconnect the electrical wires plug from the unit socket (image #29).
3. Peel the black tape wrapped around the Alarm unit by gently cutting it with a utility knife (image #30). Make sure that the knife doesn't come in contact with the unit under the tape and that you only cut the tape.
4. Remove the old battery by lifting it with a small screwdriver through the battery removal groove (image #31).
5. Prepare a new **3V Lithium #CR1220** battery, widely available at any hardware store or watch repair shop.
6. **IMPORTANT! The battery should be installed with the "+" symbol facing up and out of the unit!**



7. Gently push the new battery it into the battery compartment and make sure it doesn't fall off easily.

### **WARNING**

**Install only 3V Lithium #CR1220 batteries inside the Moisture Alarm unit. Using any other type of batteries will cause irreparable damage to the electrical unit.**

8. To secure the battery and make sure it doesn't fall out of place, wrap the battery compartment area with a small piece of electrical tape. Be careful not to cover the round cylinder which produces the alarm sound. Alternatively, you can wrap the whole alarm unit with tape and then make a hole over the alarm cylinder (image #32).
9. Insert the electrical wires plug back into the alarm unit socket.
10. Slide the alarm unit back into the dedicated slot inside the housing, opposite the buckle. Make sure to install the unit with the round alarm cylinder facing the housing interior and the LED pointing outwards, to the back of the housing (image #33).

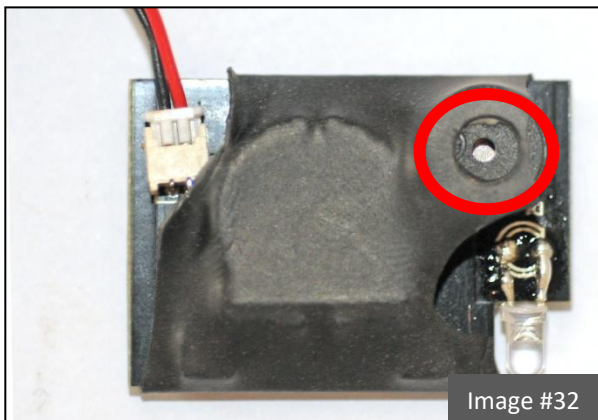


Image #32

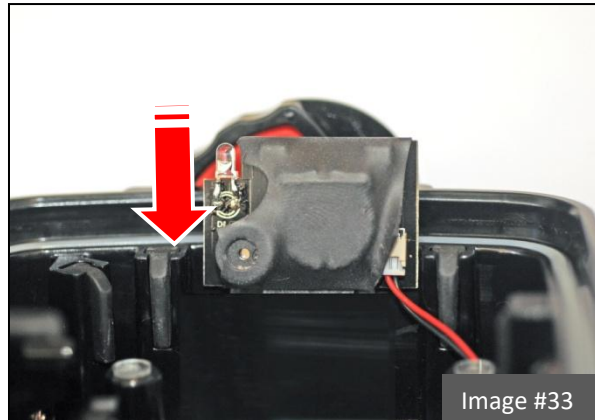


Image #33

11. You can test the Moisture Detector by placing a wet finger over the moisture sensor unit at the bottom of the housing. Once you have confirmed that the alarm is working, gently dry off the moisture sensor unit. This should silence the alarm.

## **REPLACING THE ALARM UNIT**

1. Remove the alarm unit from the housing by gently sliding it out of its slot (image #28 on the previous page).
2. Expose the white electrical plug under the black tape wrap (image #29 on the previous page).
3. Disconnect the electrical wires plug from the alarm unit socket.
4. Connect the electrical wires plug to the socket of a new alarm unit.

5. Slide the alarm unit back into the dedicated slot inside the housing, opposite the buckle. Make sure to install the alarm unit with the round alarm cylinder facing the housing interior and the LED pointing outwards, to the back of the housing (image #33 on the previous page).
6. You can test the Moisture Detector by placing a wet finger over the moisture sensor unit at the bottom of the housing. Once you have confirmed that the alarm is working, gently dry off the moisture sensor unit. This should silence the alarm.

For further information, please visit our website  
[www.fantasea.com](http://www.fantasea.com) or contact us at [info@fantasea.com](mailto:info@fantasea.com)